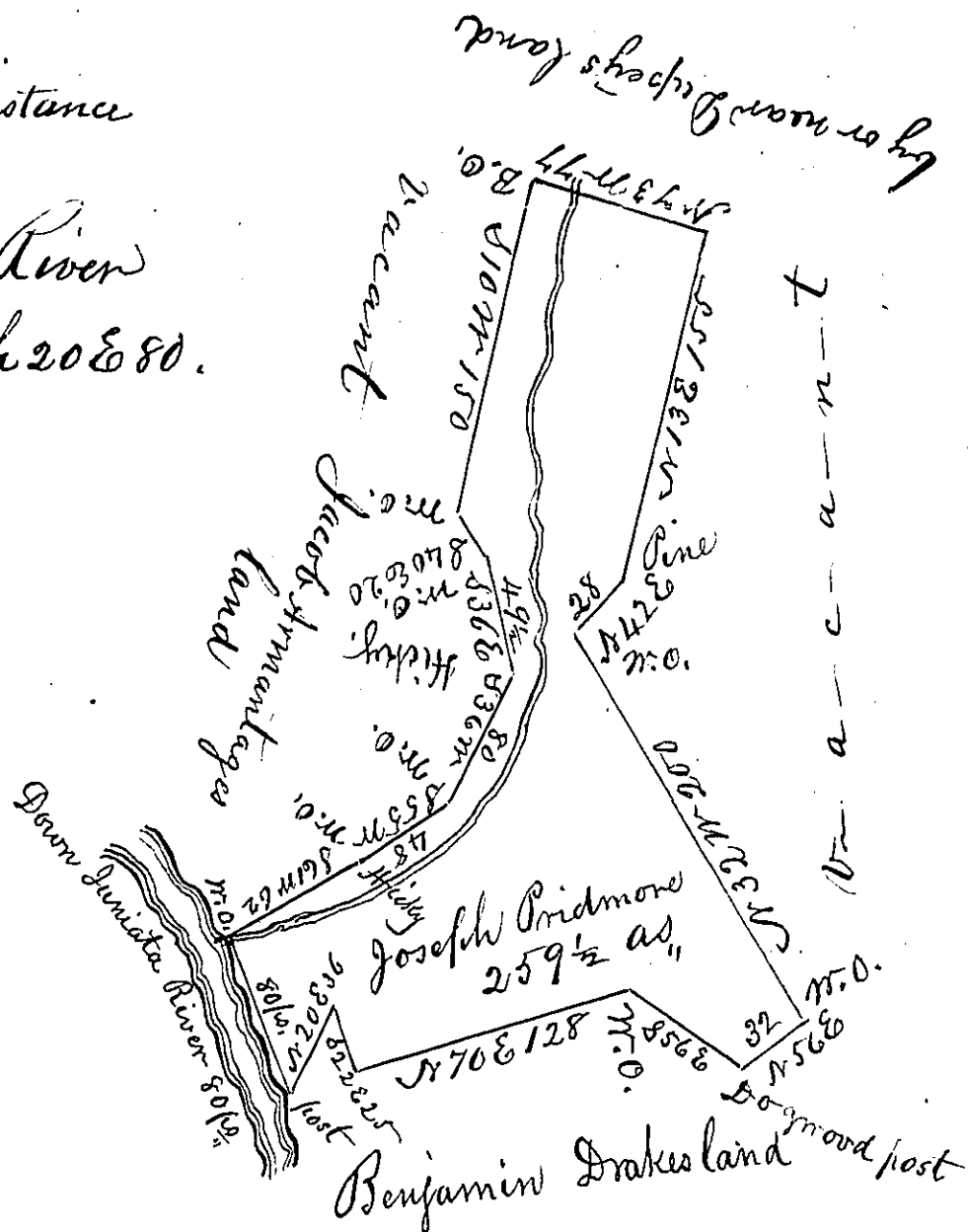


Course & Distance
down the
Juniata River
S 20 E 80 South 20 E 80.



A Draught of a tract of land on the North East Side of the Juniata River in Huntingdon township Bedford County, containing Two hundred and fifty nine acres and a half and allowance of six per cent for roads. Surveyed the 14th day of June 1786, in pursuance of a warrant dated the 11th day of March 1786, granted to Joseph Pridmore.
To John Lukens Esq. S. G. George Woods D. S.

IN TESTIMONY that the above is a copy of the original remaining on file in the Department of Internal Affairs of Pennsylvania, made conformably to an Act of Assembly approved the 16th day of February, 1833, I have hereunto set my Hand and caused the Seal of said Department to be affixed at Harrisburg, this

Thirteenth day of March 1833.

J. Simpson *Officia*,
Secretary of Internal Affairs